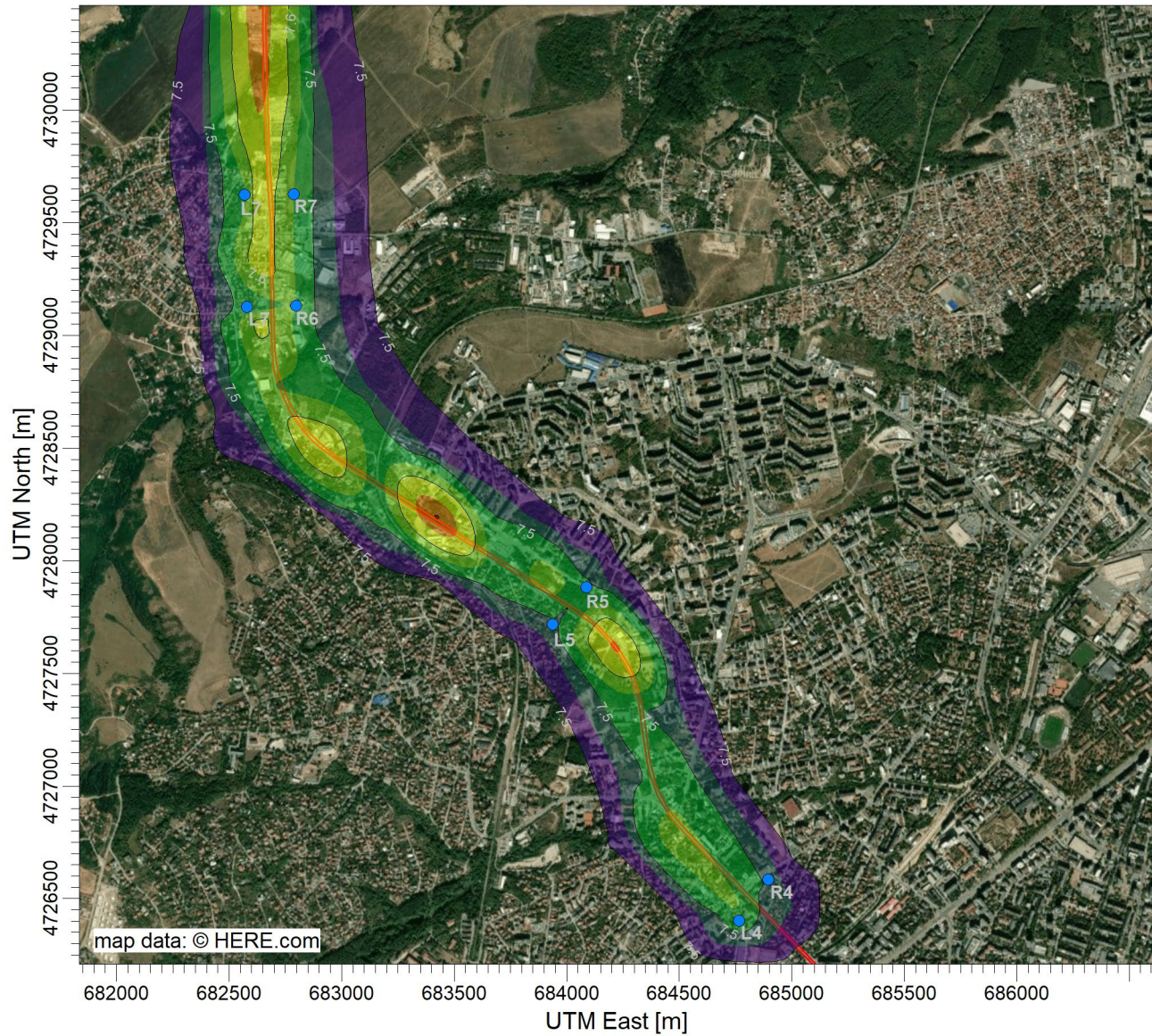


PROJECT TITLE:

Приземна средночасова концентрация на серни оксиди (SOx)

Пътен участък 2



Max: 7.76 [$\mu\text{g}/\text{m}^3$] at (683424.22, 4728194.95)

$\mu\text{g}/\text{m}^3$



COMMENTS:

R4 - 7.49 $\mu\text{g}/\text{m}^3$
L4 - 7.51 $\mu\text{g}/\text{m}^3$
R5- 7.50 $\mu\text{g}/\text{m}^3$
L5 - 7.48 $\mu\text{g}/\text{m}^3$
R6 - 7.55 $\mu\text{g}/\text{m}^3$
L6 - 7.51 $\mu\text{g}/\text{m}^3$
R7 - 7.54 $\mu\text{g}/\text{m}^3$
L7 - 7.53 $\mu\text{g}/\text{m}^3$

SOURCES:

8

RECEPTORS:

449

OUTPUT TYPE:
Concentration 93.4th percentile

MAX:

7.76 $\mu\text{g}/\text{m}^3$

COMPANY NAME:

LEGEND:

— Road

SCALE: 1:30,000

0 1 km

DATE:

01/15/2026

PROJECT NO.:

SOP_Air/EIA_2026

